

2021-2022 Navigator Team Expectations

What should my student have for class each day?

- Wired earbuds
- MacBook and charger.
- Organizational binder/folder
- Pencil

Backpack Policy

- Backpacks are expected to be in their lockers during the school day.
- Students are permitted to visit their lockers during passing periods.

Cell Phone Policy

- ★ Cell phones will be in student lockers throughout the school day.
- ★ If a student uses their cell phone:
 - **1st offense:** warning
 - **2nd offense:** warning and cell phone is taken to the office
 - **3rd offense:** office referral

Late Work/Grading

- Subject to each teacher's discretion.
- Universal - no assignments will be accepted following the end of the unit/chapter/assessment.

7th Grade Math Class

2021

Mrs. Landon

2022

Contact Info

Monday 12:49-1:38

Fridays 12:49-1:38

M-F 7:55-8:46

Email:

clandon@usd232.org

Phone 913-422-1100
ext. 2442

CLASSROOM MATERIALS

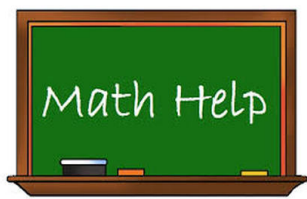
- 1 Math Textbook
- 2 Pencils/Grading Pens
- 3 Expos
- 4 Homework
- 5 Earbuds and Charged MacBook
- 6 Positive Attitude
- 7 Willingness to Learn



Concepts we will learn:

- 1 Ratio and Proportional Reasoning
- 2 Expressions and Equations
- 3 The Real Number System (fractions, decimals and integers)
- 4 Statistics and Probability
- 5 Geometry

Math is a subject that requires **practice**. Therefore, homework will be given nearly every day. In most cases, you will be given time to start and sometimes finish the assignment in class or seminar. If you have not completed your homework on time, you will need to stay after school to complete it. Late work will not be eligible for full credit. All assignments must be completed before the end of the unit or will result in a zero. If you are absent, you have two days for every one day you are absent. Both absent and late assignments should be placed in the late/absent basket. Students may redo any assignment they received an F on, but it must be completed before the chapter test. assignment.



Most of you will come across a topic that require more explanation. When this happens, see me for extra help. You may come in before school with your 7:35 pass or stay after school. Seminar time is also available. I want you all to be successful, so you must take responsibility for your own learning. I expect **students** to advocate for themselves and for their grade. When your math teacher is absent, please see the other math teacher, Mrs. Ayers for assistance.

Re-Take Policy

Students may retake a test that they earned an F. To qualify for a retake, a student cannot have any missing math assignments for that unit, must have finished the study guide, and complete corrections on the problems missed.

Students must show all work all the time.

Phones will not be used in class and will remain in student's backpacks.



OOPS COUPON

Each student will be given 1 oops coupon per quarter that can be used on any assignment. It gives you one more day to complete your assignment.

7th Grade Compact Math Class

2021

Mrs. Landon

2022

Contact Info

Monday 12:49-1:38

Fridays 12:49-1:38

M-F 7:55-8:46

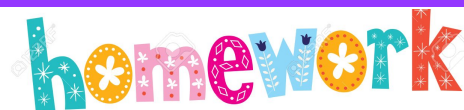
Email:

clandon@usd232.org

Phone 913-422-1100
ext. 2442

CLASSROOM MATERIALS

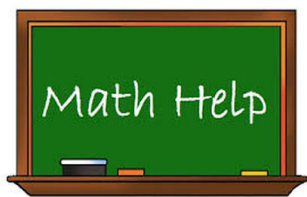
- 1 Math Textbook
- 2 Pencils/Grading Pens
- 3 Expos
- 4 Homework
- 5 Earbuds and Charged MacBook
- 6 Positive Attitude
- 7 Willingness to Learn



Concepts we will learn:

- 1 Ratio and Proportional Reasoning
- 2 Expressions and Equations
- 3 The Real Number System (fractions, decimals and integers)
- 4 Statistics and Probability
- 5 Geometry

Math is a subject that requires **practice**. Therefore, homework will be given nearly every day. In most cases, you will be given time to start and sometimes finish the assignment in class or seminar. If you have not completed your homework on time, you will need to stay after school to complete it. Late work will not be eligible for full credit. All assignments must be completed before the end of the unit or will result in a zero. If you are absent, you have two days for every one day you are absent. Both absent and late assignments should be placed in the late/absent basket. Students may redo any assignment they received an F on, but it must be completed before the chapter test. assignment.



Most of you will come across a topic that require more explanation. When this happens, see me for extra help. You may come in before school with your 7:35 pass or stay after school. Seminar time is also available. I want you all to be successful, so you must take responsibility for your own learning. I expect **students** to advocate for themselves and for their grade. When your math teacher is absent, please see the other math teacher, Mrs. Ayers for assistance.

Re-Take Policy

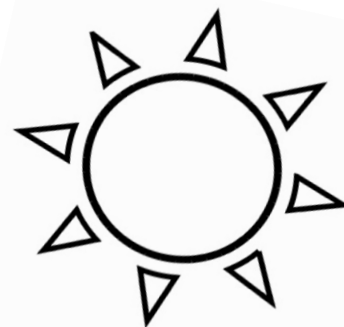
Students may retake a test that they earned an F. To qualify for a retake, a student cannot have any missing math assignments for that unit, must have finished the study guide, and complete corrections on the problems missed.

Students must show all work all the time.

Students must maintain a B average or above to stay in compact math. This is a faster paced class since we are going through all of 7th grade curriculum and half of 8th grade curriculum. Asking for help early and staying on top of your assignments is crucial.

OOPS COUPON

Each student will be given 1 oops coupon per quarter that can be used on any assignment. It gives you one more day to complete your assignment.



Welcome to 7th Pathways – Navigators

Ms. Meissbach

Contact Information:

- ◇ **Phone Number:** (913) 422-1100 ext. 3210
- ◇ **Email:** ameissbach@usd232.org
- ◇ **Room:** 300

Course Description:

Throughout this Project-Based Learning course, you will create, collaborate, and present projects rooted in real-world problems and questions. This class is all about YOU learning about your interests all while developing your 21st Century skills. Our goal together in this classroom is to challenge your critical thinking while exploring the world around us.

With our Career Exploration focus, we will concentrate on your Individual Plan of Study. Your IPS will serve as a guide to help you make decisions for high school, college, and your future career and is considered a “best practice” for districts and can help all Kansas students obtain a suitable vision of their path toward college and career readiness. The IPS is addressed as part of the “Career Awareness and Guidance” criteria in Kansas’ accreditation model (KESA).

Why Pathways?

Pathways is not your typical middle school course or any course in general! This class is completely centered on **YOU** as the student. It can be argued that no other class has the potential to prepare you more for what the real world will throw at you than Pathways. Our goal this year is to start to piece together the puzzle that is you, your passion, your purpose, and how you have the power to shape the world around you. Get excited!!!!

The 4 C's of Pathways:

1. Critical Thinking
2. Creativity
3. Collaboration
4. Communication

Course Breakdown:

Project-Based Learning – 75%
Career Exploration – 15%
Social-Emotional Learning – 10%

Expectations:

- #1 – Be kind. **Nothing positive comes from being unkind.**
- #2 – Always be open-minded with others and with yourself.
- #3 – Advocate for yourself. Communicate when the going gets tough.
- #4 – When the bell rings, you are in your seat **quietly** working on your QOTD.
- #5 – Work hard every day! Always leave Pathways feeling accomplished.

Technology Expectation: Your MacBook is closed unless you are asked to use it. Only open and work on teacher/school approved websites. Technology is a **privilege**.

2021 – 2022 Course Syllabus

3 Everyday Materials:

MacBook, pencil, & earbuds. Always!

Assessment & Grading:

Most of the work in Pathways will be graded using a rubric based on the 4 C's of Pathways – Creativity, Collaboration, Communication, and Critical Thinking. Feedback and reflection are vital components in this course and will be used to assess student progress on a daily, weekly, and monthly basis. Projects, common assessments, homework and daily activities will be used to evaluate each student's 21st-Century skill development as well.

Tardy & Absences:

What is considered a tardy?

1. Being late for class without an acceptable excuse OR a pass
2. Not being in your seat, or working quietly on your QOTD when the bell rings
3. The 4th tardy within a quarter will result in time spent in class after school

What do I do when I am absent?

- Check the weekly agenda in the Agendas Module on Canvas
- Printouts of assignments are located in the classroom
- Email Ms. Meissbach **or** come see me!

Cell Phones:

Cell phones are prohibited in the classroom. This policy will be **strictly enforced** unless specific instruction given for students to bring their phones to class for project work.

- **1st infraction:** Warning, the student will be asked to put their device away.
- **2nd Infraction:** Warning, the student will take their cell phone to the office.
- **3rd Infraction:** Office referral

How to reach Ms. Meissbach:

I am here to help your student succeed in my classroom here at MTMS. Please do not hesitate to reach out with any questions or concerns you may have. We are in this together!

Email is the best way to contact me – ameissbach@usd232.org

Signatures

I have read and understand the information given above

Student Signature _____

Parent Signature _____

NAVIGATOR SCIENCE WITH MS. NIELSEN

In life science class we will be exploring the world through science. We will do experiments, take notes, participate in class discussion, and complete various other activities all while exploring the world around us!

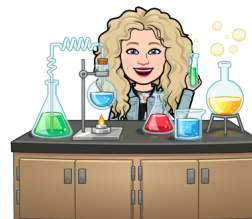


In Class: Students are expected to follow the rules and guidelines outlined in the Student Handbook, as well as those made by the teacher (Ms. Nielsen). Violations of these rules will result in consequences, such as detention.

Class Expectations: All *students* are expected to come to class ready to learn and to actively participate. For some, this means in class discussion. For others it simply means listening & taking notes. It is an expectation that students follow the Ways of the Wolf and be respectful, responsible, and safe.

Grading: Grades will be posted on Skyward, but all assignments will be listed on Canvas. The points for each assignment will be announced when the assignment is given. Assignments will include, but are not limited to:

- Tests & Quizzes
- Worksheets
- Labs, simulations, & activities
- Group projects
- Individual projects
- In-class assignments
- Journals
- Essays & Writing assignments



*****Retest Request: if a student fails a test, they can retake it. A Retest Request must be filled out and approved prior to the retake date.***

*****Late work is accepted until the end of the unit for a 20% deduction. At the end of the unit, late work will not be accepted & results in a 0%.***

IDEAS ABOUT HOMEWORK BY KRISTIN RIVERA

1. Your homework is there to help you understand what you still need to work on.
2. It is okay to get something wrong, as long as you try.
3. You are accountable for your own learning. If you don't understand something, it is your job to ask.



Ms. Nielsen's Office Hours: Monday-Friday 7:45-8:46 am.

(913) 433-1100 Ext. 3333

bnielsen@usd.232.org

STUDENT SCIENCE LABORATORY SAFETY CONTRACT

I agree to:

- Act responsibly at all times in the laboratory.
 - Follow all instructions given, orally or in writing, by my teacher.
 - Perform only those activities assigned and approved by my teacher.
 - Protect my eyes, face, hands, and body by wearing proper clothing and using protective equipment.
 - Carry out good housekeeping practices as instructed by my teacher.
 - Know the location of safety and first aid equipment in the laboratory.
 - Notify my teacher immediately in an emergency.
 - NEVER work alone in the laboratory.
 - NEVER eat or drink in the laboratory unless instructed to do so by my teacher.
 - Handle living organisms or preserved specimens only when authorized by my teacher, and then, with respect.
 - NEVER enter or work in a supply area unless instructed to do so and supervised by my teacher.
-

I, _____[print name] have read each of the statements in the Syllabus and Student Science Laboratory Contract and understand these policies. I agree to abide by the safety regulations and any additional written or verbal instructions provided by the school district or my teacher. I further agree to follow all other written and verbal instructions given in class.

Student Signature

Date Signed

Parent/Guardian Signature

Date Signed

Welcome to 7th ELA– Navigators

Ms. Gould

Contact Information

- ◇ **Phone Number:** (913) 422-1100 ext. 3332
- ◇ **Email:** egould@usd232.org
- ◇ **Room:** 301

Course Description

We will continue to expand on past ELA learning and standards. We will develop our critical thinking, reading, and writing skills. We will read a variety of texts—both fiction and non-fiction—in a variety of formats. We will learn to write in a variety of styles. We will prepare for state assessments, as well as learn how the skills we are learning transfer to the real world. We will learn through discussion and collaboration, as well as through individual study.

Expectations

I expect students:

1. to learn
2. to try and try again
3. to know and care for yourself, your teacher, and your classmates

Technology Expectation

Your MacBook is closed unless you are asked to use it. Only open and work on teacher/school approved websites. Technology is a **privilege**.

3 Everyday Materials

MacBook, pencil, & earbuds. *Always!*

Assessment & Grading

Students will be graded on a total point system. The focus will be the student's mastery of ELA skills and content. Projects, tests, quizzes, common assessments, homework and daily activities will be used to evaluate key skills in the ELA curriculum. I will use a variety of assessments to evaluate student learning on a daily, weekly and monthly basis.

Canvas vs. Skyward

Not all grades on Canvas will end up in Skyward. There will be quizzes or other assignments that are used to gauge student learning but do not count towards the overall grade. Please refer to Skyward to know your current grade.

Late Work Policy

20% automatic deduction for assignments turned in after the due date. No assignments will be accepted following the end of the unit/chapter/assessment.

2021 – 2022 Course Syllabus

Backpack Policy

Backpacks are expected to be in their lockers during the school day. Students are permitted to visit their lockers during passing periods.

Tardy & Absences

What is considered a tardy?

1. Being late for class without an acceptable excuse OR a pass
2. Not being in your seat, or working quietly on your bell work when the bell rings
3. The 4th tardy within a quarter will result in time spent in class after school

What do I do when I am absent?

- Check the “What did I miss?” folders the day you return or check your email for instructions on what to do.
- Email **or** come see me if you have questions!

Cell Phones

Cell phones are prohibited in the classroom. This policy will be **strictly enforced** unless specific instruction given for students to bring their phones to class for project work.

- **1st infraction:** Warning, the student will be asked to put their device away.
- **2nd Infraction:** The student will take their cell phone to the office.
- **3rd Infraction:** Office referral

How to reach Ms. Gould

I am here to help you succeed! Please do not hesitate to reach out with any questions or concerns you may have. We are in this together!

Email is the best way to contact me – egould@usd232.org

Signatures

I have read and understand the information given above.

Student Signature: _____

Parent Signature: _____

Kansas History and World Geography

Instructor:	Drew Walters	Phone	(913) 422-1100 Ext. 2844
Location	Room 302	Email	ddwalters@usd232.org

Course Description:

The geography course in the seventh grade will familiarize students with their world using the essential elements and geography themes. Students will develop knowledge about location, place, human environment interaction, movement and regions. The course will compare and contrast these themes across all continents. Students will be able to apply their knowledge to their community, state, nation, world and themselves. Instruction will also integrate concepts and ideas from history, economics, geography, civics and the humanities.

The Kansas History course begins with a study of native inhabitants of the land that was to become Kansas. Students will analyze major events, individuals, groups, innovations, and movements from pre-historic days to the present. It will build a connection or relationship between the student and the state. Just like the geography course, this will integrate thinking skills, historical processes and content so the students can apply their learning to their own lives.

7th Grade Social Studies Units of Study:

1st Semester Geography- Introduction to Geography, Physical Geography, Human Geography, Geo-Literacy: Human Impact on the Earth and Physical Systems

2nd Semester Kansas History- Early Peoples, Statehood and Civil War, Kansas: Through the Stars with Difficulty, Progress and Reform, Good Times and Bad, Kansas and a Changing World, Kansas and a Modern World.

Materials Needed:

Students need notebook paper, pencils, & MacBook. Textbooks will be provided in class and checked out to students if needed.

Evaluation/Grading:

The students will be graded on a total point system. The focus will be the student's mastery of geographical and historical skills as well as mastery of the content area. Projects, tests, quizzes, common assessments, homework and daily activities will be used to evaluate key skills in the Social Studies curriculum. I will use a variety of assessments to evaluate student learning on a daily, weekly and monthly basis.

Be Safe

Be Respectful

Be Responsible

Late Work Policy

Students that turn in late work will receive a 20% off for that assignment. Any assignment that is over two weeks late will be given a zero.

I hope you have a wonderful experience in 7th grade and I am looking forward to the 2021-2022 school year.

Drew Walters

Be Safe

Be Respectful

Be Responsible